

Electronic Soft Starters SIRIUS 3RW30

For soft machine start-up and reduced mechanical stress



They protect the machine's mechanical power-transmitting elements during start-up through reduction of the starting torque and efficiently guard the network against excessive inrush peaks through reduced power input: the electronic soft starters 3RW30. Switchover current or torque peaks typical of star-delta starters are reliably excluded.

Advantages at a glance:


- Optimum adjustment to the drive application through separate potentiometers for starting voltage (40...100%) and start-up time up to 20 sec.
- Minimum power loss through integrated bypass contacts after start-up completion
- Up to 70% space savings in the control cabinet compared to star-delta combination
- Reduced mounting costs and wiring through simple 4-wire motor supply line

SIRIUS

Answers for Industry

SIEMENS

Strong partners for industry and trade

3RW30 soft starters for standard applications						
Ambient temperature 40 °C						
Rated operating voltage Ue	Rated operating current Ie	Rated power of three-phase motors with rated operating voltage Ue		Size	Width	Order No.
V	A	... kW at 230 V	... kW at 400 V			
Soft starters for simple start-up conditions and high switching frequencies						
200 ... 400	3	0.55	1.1		22.5 mm	3RW30 03-□CB5 4
Soft starters for three-phase asynchronous motors						
200 ... 480	3.6	0.75	1.5	S00	45 mm	3RW30 13-□BB□ 4
	6.5	1.5	3	S00	45 mm	3RW30 14-□BB□ 4
	9	2.2	4	S00	45 mm	3RW30 16-□BB□ 4
	12.5	3	5.5	S00	45 mm	3RW30 17-□BB□ 4
	17.6	4	7.5	S00	45 mm	3RW30 18-□BB□ 4
	25	5.5	11	S0	45 mm	3RW30 26-□BB□ 4
	32	7.5	15	S0	45 mm	3RW30 27-□BB□ 4
	38	11	18.5	S0	45 mm	3RW30 28-□BB□ 4
	45	11	22	S2	55 mm	3RW30 36-□BB□ 4
	63	18.5	30	S2	55 mm	3RW30 37-□BB□ 4
	72	22	37	S2	55 mm	3RW30 38-□BB□ 4
	80	22	45	S3	70 mm	3RW30 46-□BB□ 4
	106	30	55	S3	70 mm	3RW30 47-□BB□ 4

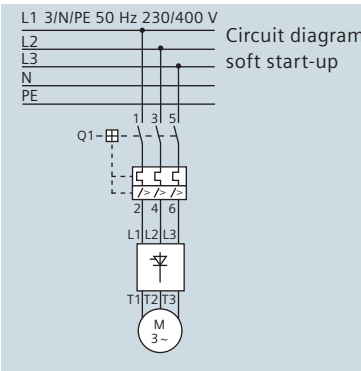
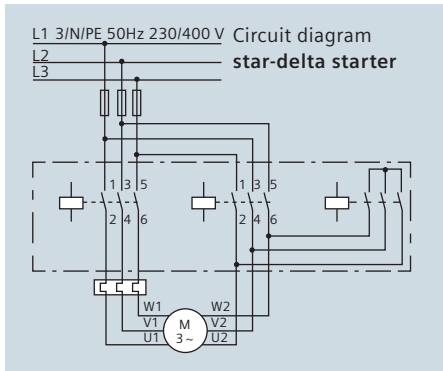
□ = Order No. supplement for connection type:

with screw-type terminals 1
with spring-loaded terminals * 2

□ = Order No. supplement for rated control supply voltage Us:

AC/DC 24 V 0
AC/DC 110 ... 230 V 1

*Control connections consistently in spring-loaded technology, main connections only with devices up to S0



Typical application areas:

- Ventilators, fans, blowers
- Hydraulic pumps
- Vacuum pumps
- Piston and screw compressors
- Machines with belt drive

For optimum soft start-up and **ramp-down** as well as integrated motor overload and intrinsic device protection, settable current limiting and integrated remote reset, we recommend our **SIRIUS 3RW40** electronic soft starter.

The complete range of softstarters and accessories is available on the Internet at www.siemens.com/softstarter and in the IC10 catalogue.

Siemens AG
Industry Sector
Low-Voltage Controls and Distribution
Partner of the electrical trade
P.O. Box 4848
90026 NÜRNBERG
GERMANY

www.siemens.com/softstarter

Subject to changes without prior notice 10/08
Order No.: E20001-A870-M102-V2-7600
Dispo 18101
10805938 EGCD.52.9.07 SB 06095.0
Printed in Germany
© Siemens AG 2009

The information contained in this brochure merely contain general descriptions or performance characteristics, which may not always be applicable in the described form to the specific application case or may change due to product advancement. The desired performance characteristics shall only be binding if they are expressly specified upon contract conclusion.

All product designations may be brands or product names of Siemens AG or other sub-suppliers, whose utilization by third parties for their rights may violate the rights of the owner.