



# WAGO Marking

Sample Book



# The Fastest Marking System

## WAGO Marking Solutions for Greater Safety and Clarity in the Control Cabinet

- Designing high-performance, customized marking solutions using perfectly synchronized hardware and software
- Long-lasting, indelible, scratch-proof marking
- Terminal block marking provide clearer organization in the control cabinet – using multi-line marking strips
- Versatile marking options for cables and conductors
- Broad selection of label types (e.g., printable fabric), push-button markers and type plates optimizes marking for devices and control cabinets
- Marking media are available in a variety of colors and sizes

## Find Appropriate Marking Media



Product Finder for  
Marking Media

# Content

## **Marking Media**

Terminal Block Marking	4
Cable and Conductor Markers	10
Device Marking	22

## **Workflow Support in Control Cabinets**

Greater Efficiency in Control Cabinet Marking	46
Quickly Import Your (Circuit Diagram) Projects	47

## **Printer**

Accessories for Smart Printer	48
WAGO Thermal Transfer Smart Printer	49



# Terminal Block Marking

## **The right marking is essential for clearly organized, service-friendly wiring.**

WAGO offers several options for implementing the right marking solution at the right price. Clearly organize and label all control cabinet components using time-saving marking strips and WMB Inline markers.

WAGO provides multi-line marking for added convenience and greater detail that helps reduce installation errors. The continuous marking strip, which is supplied as continuous strip on a reel,

can be applied consistently – even with mixed cross-sections.

WAGO-exclusive WMB Inline markers are connected to one another and can be applied to 3.5 mm, 4 ... 4.2 mm and 5 mm or 5.2 mm wide terminal blocks. They can also be separated for wider terminal blocks. This versatility makes them the perfect fit for any terminal block width.

A close-up photograph of a multi-colored terminal block. The block is divided into sections: grey on the left, blue in the middle, and green on the right. Wires are plugged into the top row of terminals. Two black wires are in the grey section, three blue wires are in the blue section, and one yellow wire is in the green section. The bottom row of terminals is mostly empty, with a white component in the grey section. Labels 'Block A- X.20', 'Block A- X.21', and 'Block A- X.22' are visible on the front face, along with a row of terminal numbers from 27 to 40.

**Block A- X.20**

**Block A- X.21**

**Block A- X.22**

6 27 28 29 30 31 32 33 34 35 36 37 38 39 40

# Marking Strips

TOPJOB S Series 2001				TOPJOB S Series 2002				9	10	CE					
1	2	N	PE	1	2	N	PE				5	6	N	PE	7

For Smart Printer		
Item Number	Width/Color	Roll
2009-110 (sample)	11 mm, white	50 m
2009-110/020-002	11 mm, yellow	20 m
709-177	7.5 mm, translucent	50 m
709-178	7.5 mm, white	50 m
757-901/000-050	10 mm, white	50 m





# Markers

## On a Roll – WMB Inline and Mini-WSB Inline

10	11	12	N	PE	13	14	15	N	PE	16	17	18	N	PE
----	----	----	---	----	----	----	----	---	----	----	----	----	---	----

1	2	3	4	5	6	7	8	9	10	11	12	13	14	15	16	PE	PE
---	---	---	---	---	---	---	---	---	----	----	----	----	----	----	----	----	----

For Smart Printer			
Item Number	Terminal Block Width	Roll	Compatible Roller
2009-113* WMB Inline	3.5 mm	2,300 pcs	258-5007
2009-114* WMB Inline	4.0 ... 4.2 mm	2,000 pcs	258-5007
2009-115*, WMB Inline (top sample)	5.0 ... 5.2 mm	1,500 pcs	258-5007
2009-141, Micro-WSB Inline****	4.0 mm	2,000 pcs	258-5011
2009-145,* Mini-WSB Inline (bottom sample)	5.0 ... 5.2 mm	1,700 pcs	258-5008
2009-515 WMB Inline for Phoenix Contact Rail- Mount Terminal Blocks**	5.0 ... 5.2 mm	900 pcs	258-5009
2009-615 WMB Inline for Weidmüller Rail-Mount Terminal Blocks***	5.0 ... 5.2 mm	1,200 pcs	258-5010

\* Color variations upon request

\*\*\* replaces WS 10/5 marker

\*\* replaces UC-TM5 and ZB5 markers

\*\*\*\* for 763 and 2857 Series



# Cable and Conductor Markers

**WAGO offers you versatile options for marking cables and conductors – even across the greatest variety of marking surface sizes and various diameters!**

The choice is yours: Regardless of whether you prefer marking sleeves, self-laminating labels, conductor

markers for thread-on mounting or shrink tubes – WAGO has the right solution for all applications.

E1.A1.128

=PD 1 + E1.A1.30

=PD 1 + E1.A1.53

11

11

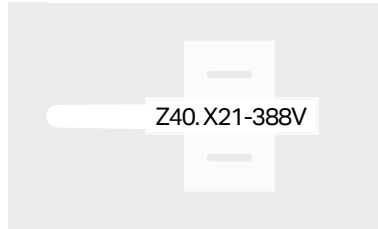
11

14

14

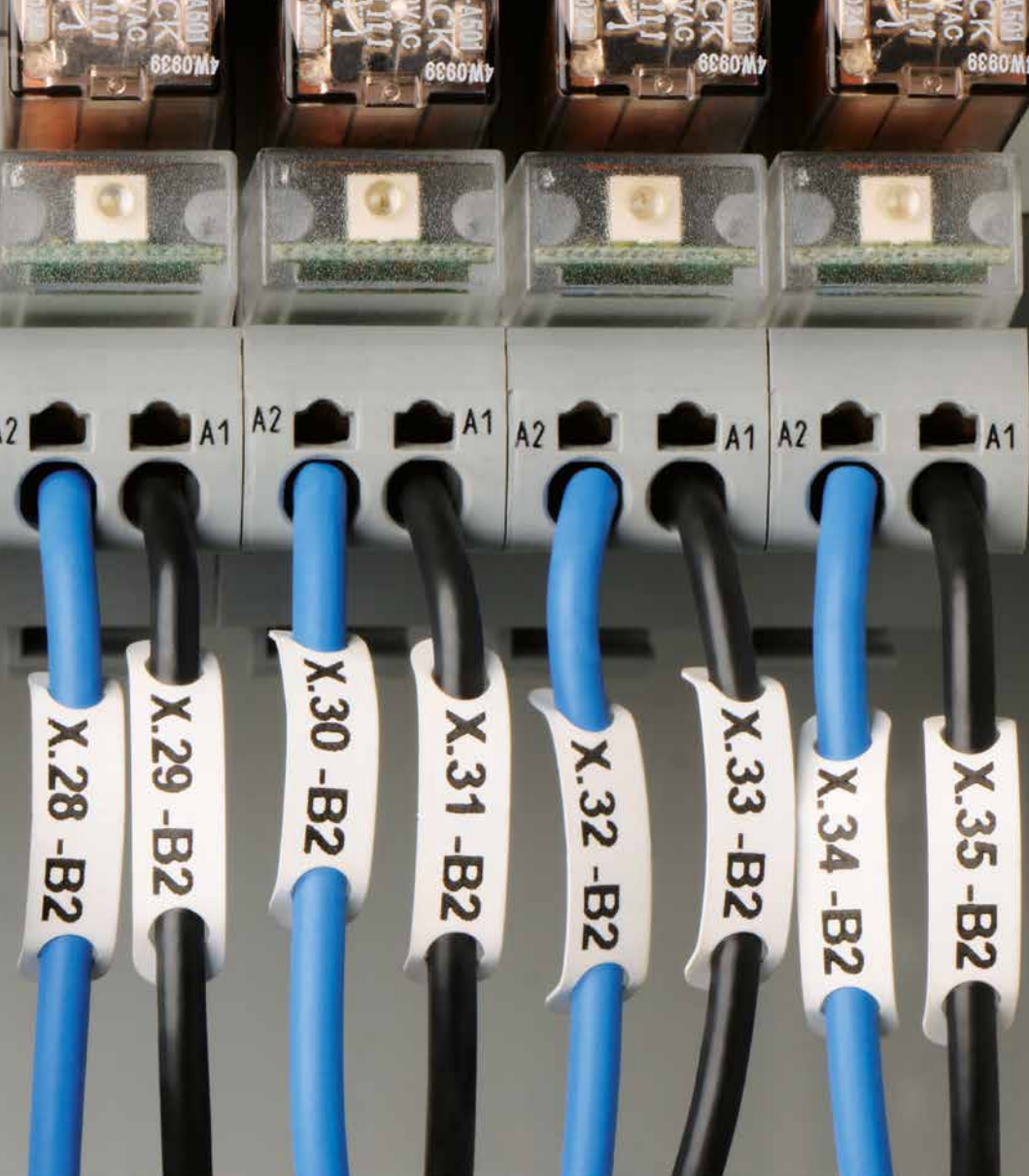
18

# Marking Sleeves



For Smart Printer			
Item Number	Length	Wire Diameter	Compatible Markers
211-812	12 mm	1.4 ... 5.0 mm	211-811, 12 x 4 mm
211-813	12 mm	5.0 ... 11.0 mm	211-811, 12 x 4 mm
211-823	23 mm	1.4 ... 5.0 mm	211-821, 23 x 4 mm
211-824	23 mm	5.0 ... 11.0 mm	211-821, 23 x 4 mm
211-829 (sample)	23 mm	Secure using cable ties	211-821, 23 x 4 mm
211-922*	23 mm	1.5 ... 2.5 mm	211-821, 23 x 4 mm
211-923*	23 mm	2 ... 4 mm	211-821, 23 x 4 mm
211-924*	23 mm	4 ... 7 mm	211-821, 23 x 4 mm
211-925*	23 mm	6 ... 10 mm	211-821, 23 x 4 mm
211-926*	23 mm	10 ... 14 mm	211-821, 23 x 4 mm
211-927*	23 mm	14 ... 22 mm	211-821, 23 x 4 mm

\* contains halogen



X.28 -B2

X.29 -B2

X.30 -B2

X.31 -B2

X.32 -B2

X.33 -B2

X.34 -B2

X.35 -B2

A1

A1

A1

A1

A2

A2

A2

A2

A2

A2

A2

A2

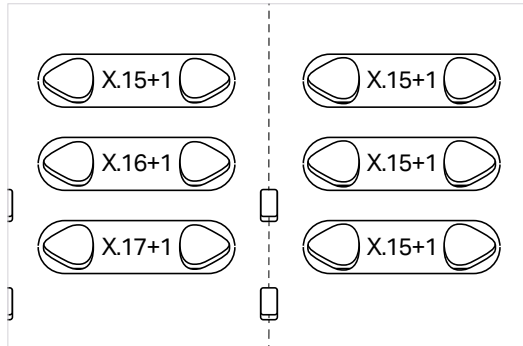
A501  
CK  
VAC  
4W0939

A501  
CK  
VAC  
4W0939

A501  
CK  
VAC  
4W0939

A501  
CK  
VAC  
4W0939

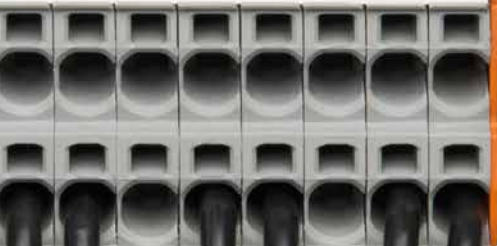
# Wire Markers for Thread-On Mounting



For Smart Printer		
Item Number	Writable Surface	Wire Marking
211-861	5 x 10.5 mm, 3 lines, white	0.75 ... 1.5 mm <sup>2</sup>
211-861/000-002	5 x 10.5 mm, 3 lines, yellow	0.75 ... 1.5 mm <sup>2</sup>
211-862 (sample)	7 x 10.5 mm, 3 lines, white	2.5 ... 6.0 mm <sup>2</sup>
211-862/000-002	7 x 10.5 mm, 3 lines, yellow	2.5 ... 6.0 mm <sup>2</sup>
211-863	10 x 17 mm, 2 lines, white	6.0 ... 16 mm <sup>2</sup>
211-863/000-002	10 x 17 mm, 2 lines, yellow	6.0 ... 16 mm <sup>2</sup>

WAGO Serie 221

Ader- und Kabelkennzeichnung



Schrumpfschläuche





# Shrink Tubes

210	211	212	213	sample	Muster
-----	-----	-----	-----	--------	--------

For Smart Printer, halogen-free, 2:1 shrink ratio			
Item Number	Unshrunk Ø/Color	Cross-Section	Roll
211-500	2.4 mm, white	0.25 ... 0.75 mm <sup>2</sup>	20 m
211-500/000-002	2.4 mm, yellow	0.25 ... 0.75 mm <sup>2</sup>	20 m
211-501	3.2 mm, white	0.75 ... 1.00 mm <sup>2</sup>	20 m
211-501/000-002	3.2 mm, yellow	0.75 ... 1.00 mm <sup>2</sup>	20 m
211-502	4.8 mm, white	1.00 ... 2.50 mm <sup>2</sup>	20 m
211-502/000-002	4.8 mm, yellow	1.00 ... 2.50 mm <sup>2</sup>	20 m
211-503	6.4 mm, white	4.00 ... 6.00 mm <sup>2</sup>	20 m
211-503/000-002 (sample)	6.4 mm, yellow	4.00 ... 6.00 mm <sup>2</sup>	20 m
211-504	9.5 mm, white	10.0 ... 16.0 mm <sup>2</sup>	15 m
211-504/000-002	9.5 mm, yellow	10.0 ... 16.0 mm <sup>2</sup>	15 m
211-505	12.7 mm, white	25.0 ... 35.0 mm <sup>2</sup>	15 m
211-505/000-002	12.7 mm, yellow	25.0 ... 35.0 mm <sup>2</sup>	15 m
211-506	19 mm, white	35.0 ... 50.0 mm <sup>2</sup>	15 m
211-506/000-002	19 mm, yellow	35.0 ... 50.0 mm <sup>2</sup>	15 m

A.0001

A.0002

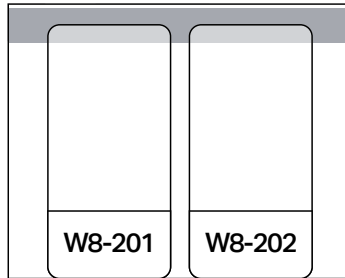
A.0003

A.0004

A.0005



# Self-Laminating Labels



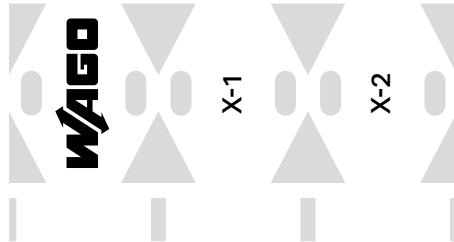
**Note:**

**Change the ink ribbon to 258-5014**

For Smart Printer		
Item Number	Writable Surface	Cable Diameter
211-855 (sample)	9 x 18 mm, 2 lines	max. 9 mm
211-856	15 x 22 mm, 2 lines	max. 12 mm
211-857	18 x 44 mm, 1 lines	max. 22 mm

WA-0037-0003

# Cable Tie Markers



For Smart Printer		
Item Number	Writable Surface	Roll
211-835 (sample)	25 x 10 mm, 1 line, white	500 pcs
211-835/000-002	25 x 10 mm, 1 line, yellow	500 pcs
211-835/000-005	25 x 10 mm, 1 line, red	500 pcs
211-836	100 x 15 mm, 2 lines, white	800 pcs
211-836/000-002	100 x 15 mm, 2 lines, yellow	800 pcs
211-836/000-005	100 x 15 mm, 2 lines, red	800 pcs
211-836/000-006	100 x 15 mm, 2 lines, blue	800 pcs
211-836/000-012	100 x 15 mm, 2 lines, orange	800 pcs
211-836/000-018	100 x 15 mm, 2 lines, green	800 pcs
211-837	44 x 10 mm, 2 lines, white	500 pcs
211-837/000-002	44 x 10 mm, 2 lines, yellow	500 pcs
807-090/101-100	Suitable cable ties	

- BMK2	WAGO Kontakttec	Hansa	32423 Min	Product	Date	ID
- BMK4	<b>WAGO</b>	Label 44 x 99, color white	November 2023	210-803		
- BMK6	SH & Co. KG					
- BMK8	SH & Co. KG					
SH & Co. KG						
SH & Co. KG						
SH & Co. KG						
SH & Co. KG						
SH & Co. KG						
SH & Co. KG						

# Device Marking

**WAGO's broad selection of label types, push-button markers, fabric labels and type plates optimizes marking for devices and control cabinets.**

Most labels can be conveniently printed directly from a roll. Additionally, various colors, sizes and frames are available for push-button markers or plastic covers.

Take advantage of WAGO's free software to easily customize marking!

Asset	<b>Sockets</b>	Sockets	...
	<b>Room 1</b>	Room 2	...





# Marking Strips for Device Marking

Snap-On

<b>F1</b>	<b>F2</b>	<b>F3</b>	<b>F4</b>	<b>F5</b>	<b>F6</b>
-----------	-----------	-----------	-----------	-----------	-----------

For Smart Printer		
Item Number	Width	Roll
2009-110	11 mm	50 m
2009-110/020-002	11 mm	20 m
210-742 (sample)	15 mm	20 m



**ACHTUNG!**

**Nicht unter Last schalten**

**ATTENTION!**

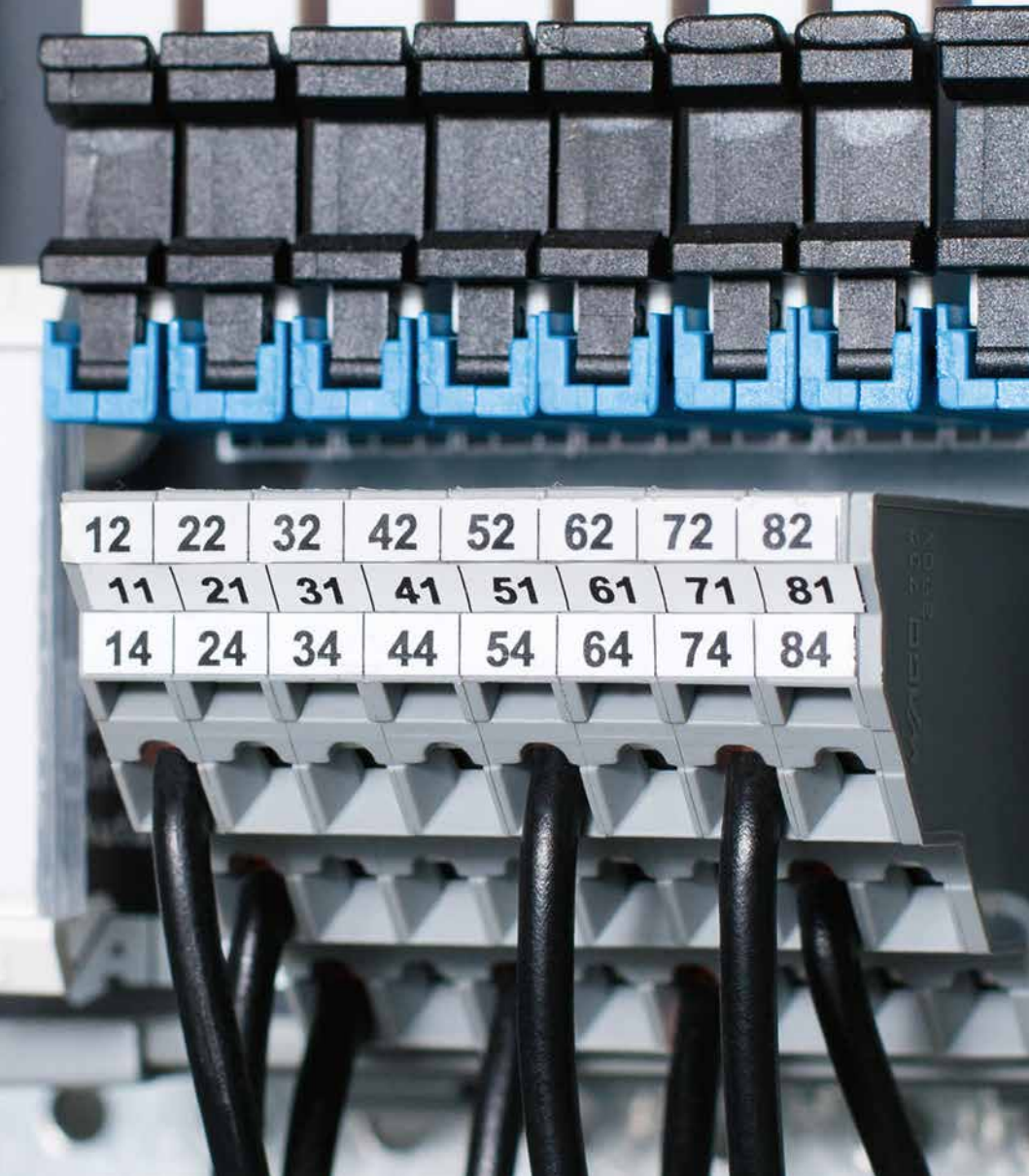
**Do not switch under load**

# Marking Strips

## Self-Adhesive

210-702				ABCD-567		WAGO GmbH & Co. KG 32432 Minden www.wago.com
1	2	3		123	456	
1N	2N	3N				

For Smart Printer		
Item Number	Width/Color	Roll
210-702 (sample)	15 mm, white	50 m
210-702/020-005	15 mm, red	20 m
210-870	10 mm, white	20 m
210-871	10 mm, silver	20 m
210-872	20 mm, white	20 m
210-873	20 mm, silver	20 m
210-874	30 mm, white	20 m
210-875	30 mm, silver	20 m
210-876	46 mm, white	20 m
210-876/000-002	46 mm, yellow	20 m
210-876/000-005	46 mm, red	20 m
210-876/000-006	46 mm, blue	20 m
210-876/000-0018	46 mm, green	20 m
210-877	46 mm, silver	20 m
210-880 (for Siemens ET200)	12.7 mm, white	20 m
210-880/000-002 (for Siemens ET200)	12.7 mm, yellow	20 m
210-882 (for Siemens S7)	22.6 mm, white	20 m
210-882/000-002 (for Siemens S7)	22.6 mm, yellow	20 m



12 22 32 42 52 62 72 82

11 21 31 41 51 61 71 81

14 24 34 44 54 64 74 84

# Continuous Labels

## Self-Adhesive

1	2	3	4	5	6	7	8	9	10	11	12	13	14	15
1	2	3	4	5	6	7	8	9	10	11	12	13	14	15
1	2	3	4	5	6	7	8	9	10	11	12	13	14	15
1	2	3	4	5	6	7	8	9	10	11	12	13	14	15
1	2	3	4	5	6	7	8	9	10	11	12	13	14	15
1	2	3	4	5	6	7	8	9	10	11	12	13	14	15
1	2	3	4	5	6	7	8	9	10	11	12	13	14	15
1	2	3	4	5	6	7	8	9	10	11	12	13	14	15
1	2	3	4	5	6	7	8	9	10	11	12	13	14	15
1	2	3	4	5	6	7	8	9	10	11	12	13	14	15

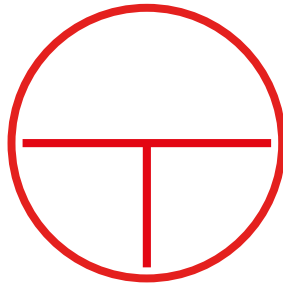
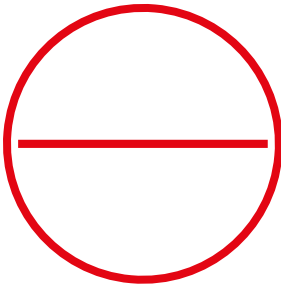
### For Smart Printer

Item Number	Width/Number of Strips	Roll
210-831	2.3 mm/9	25 m
210-832 (sample)	3.0 mm/9	25 m
210-833	6.0 mm/5	25 m
210-834	5.0 mm/5	25 m



# Circuit Markers

## Self-Adhesive



For Smart Printer		
Item Number	Size/Color	Roll
210-813 (left sample)	Ø 40 mm, white	750 pcs
210-814 (right sample)	Ø 40 mm, white	750 pcs

NC | NC | NO | DC 24V  
21 31 43 A1+

NO | NC | NC | NO  
13 21 31 43

3RH  
22E

22E

X.13

X.14

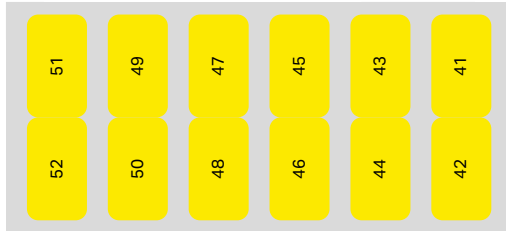
G/970217 3RH1122-28B40  
14 22 32 44 A2-  
NO | NC | NC | NO

G/970217 3RH1122-28B40  
14 22 32  
NO | NC | NC | NO



# Labels

## Self-Adhesive



For Smart Printer		
Item Number	Size/Color	Roll
210-805	6 x 15 mm, white	3,000 pcs
210-805/000-002	6 x 15 mm, yellow	3,000 pcs
210-805/000-005	6 x 15 mm, red	3,000 pcs
210-806	9 x 15 mm, white	3,000 pcs
210-806/000-002 (sample)	9 x 15 mm, yellow	3,000 pcs
210-807	8 x 20 mm, white	3,000 pcs
210-807/000-002	8 x 20 mm, yellow	3,000 pcs

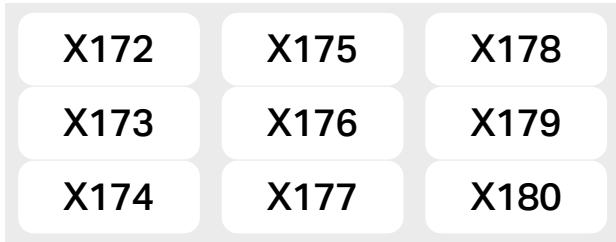
X-15

MBS 110  
310

Etage C3 3. Etage C4  
S-11 S-12

# Labels

Self-Adhesive



For Smart Printer		
Item Number	Size/Color	Roll
210-808 (sample)	9.5 x 25 mm, 3 lines, white	1,500 pcs
249-119	Height-adjustable group marker carrier	



WAGO

Hansastr. 27  
D-32423 Minden

GL

S.11 - 98 X2

WAGO

52 53

WAGO

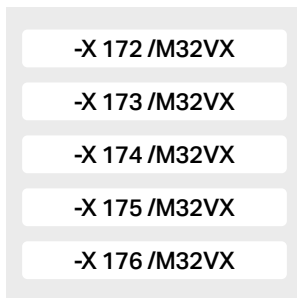
54 55

750-501

750-501

# Labels

## Self-Adhesive

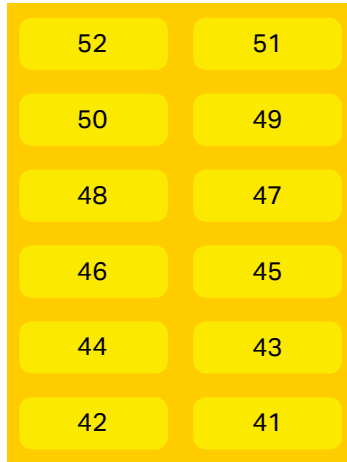


For Smart Printer		
Item Number	Size	Roll/Color
210-810 (sample)	5 x 35 mm	1,500 pcs/white
249-120	Height-adjustable group marker carrier	



# Fabric Labels

Self-Adhesive



## For Smart Printer

Item Number	Size/Color	Roll
210-811	7 x 20 mm, 2 lines, white	3,000 pcs
210-811/000-002 (sample)	7 x 20 mm, 2 lines, yellow	3,000 pcs

# WAGO

WAGO GmbH & Co. KG  
Hansastraße 27  
32423 Minden

CE



DIN EN / VDE

61439-

0660-600

Herstellungsdatum

24.05.2023

Auftragsnummer

1234/2023

Bemessungs-  
spannung U<sub>e</sub>

230 V 50 Hz

Bemessungsstrom SK=I<sub>nA</sub>

12345 A

Schutzart/-klasse

IP 44

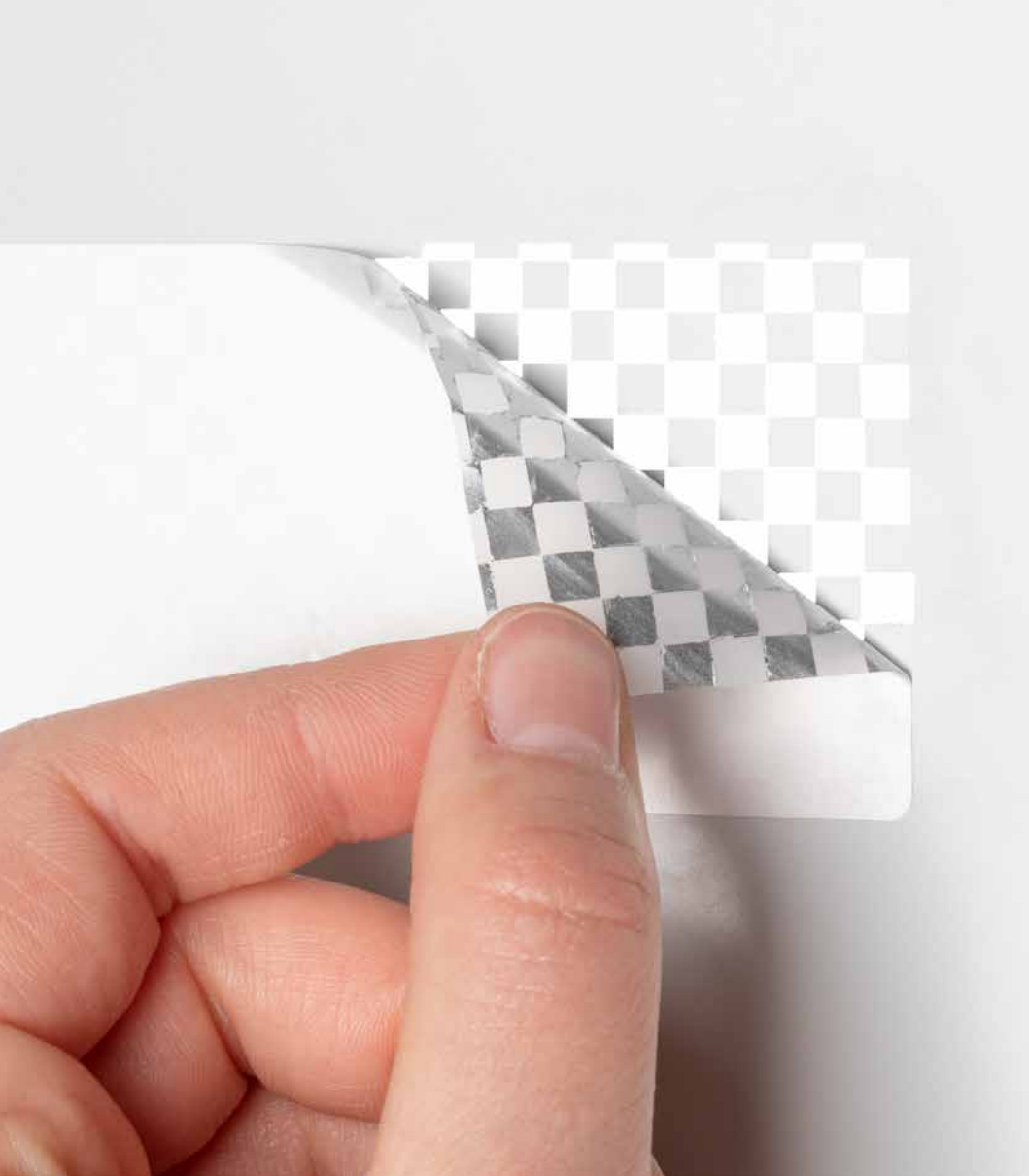





# Type Labels

<b>WAGO GmbH &amp; Co. KG</b> 32423 Minden www.wago.com		
Muster/sample	Label for Type Plate	
Product	polyester label 44 x 99 mm, silver	
Date	Januar 2023	
Art.-No.	210-804	

For Smart Printer		
Item Number	Size/Color	Roll
210-801	70 x 33 mm, white	500 pcs
210-801/000-002	70 x 33 mm, yellow	500 pcs
210-802	70 x 33 mm, silver	500 pcs
210-803	99 x 44 mm, white	500 pcs
210-804 (sample)	99 x 44 mm, silver	500 pcs
210-812	50 x 25 mm, silver	500 pcs



# Safety Labels

<b>WAGO</b>		<b>WAGOMAGIC</b> $\text{CE}$	
engine s/n: MD S-8102-06-30-12-code128			
Input:	400V/50Hz	Y 2018	
		210-824	
Output:	2000W	cos 0,92	
		wago.com	

## For Smart Printer

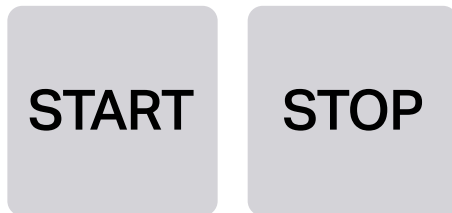
Item Number	Size/Color	Roll
210-824 (sample)	99 x 44 mm, silver	300 pcs



### For Smart Printer

Frame	Push-Button Label, Color
210-853, universal	210-852, silver
-	210-855, silver
-	210-854, silver (sample)
-	210-847, silver
-	210-848, silver
Eaton*	210-850, silver
Siemens (for adhesives)*	210-842, silver
Siemens (for snap ons)*	210-842, silver
Siemens (for adhesives)*	210-836, silver
Siemens (for snap ons)*	210-836, silver
Siemens (for adhesives)*	210-840, silver
Siemens (for snap ons)*	210-840, silver

# Push-Button Markers



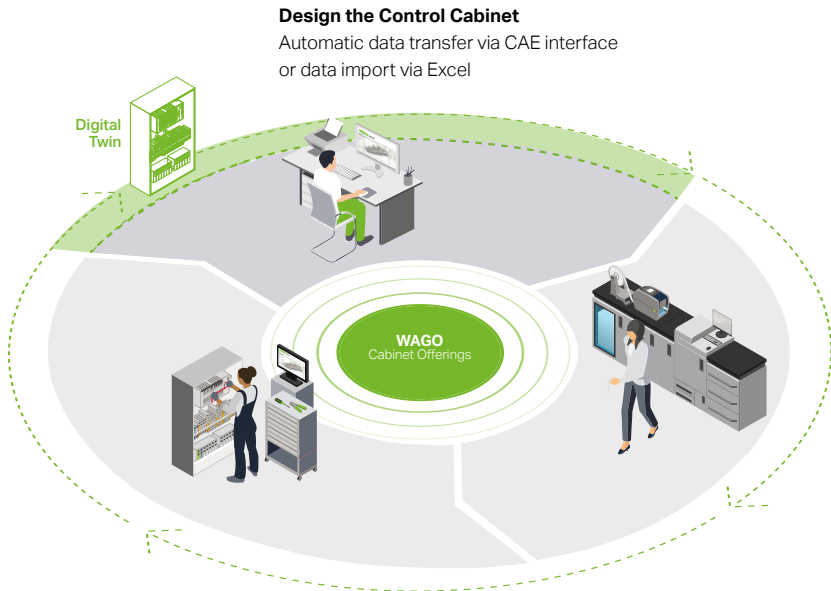
	Covers	Size of Push-Button Markers and Covers	PU Covers/Bag	PU Push-Button Markers/Roll
	-	27.0 x 19.0 mm	100 pcs	350 pcs
	-	27.0 x 18.0 mm	-	350 pcs
	-	28.0 x 28.0 mm	-	500 pcs
	-	22.0 x 22.0 mm	-	300 pcs
	-	27.0 x 27.0 mm	-	250 pcs
	210-851	26.5 x 18.0 mm	100 pcs	1000 pcs
	-	27.0 x 12.5 mm	-	350 pcs
	210-843 **	27.0 x 12.5 mm	100 pcs	350 pcs
	-	27.0 x 17.5 mm	-	350 pcs
	210-837 **	27.0 x 17.5 mm	100 pcs	350 pcs
	-	27.0 x 27.0 mm	-	250 pcs
	210-841**	27.0 x 27.0 mm	100 pcs	250 pcs

\* not offered by WAGO

\*\* optionally suitable

# Greater Efficiency in Control Cabinet Marking

Suitable Solutions, from Control Cabinet Design to Installation



## Assemble Components

Versatile options for marking terminal blocks, devices and conductors

## Prepare and Print Markers

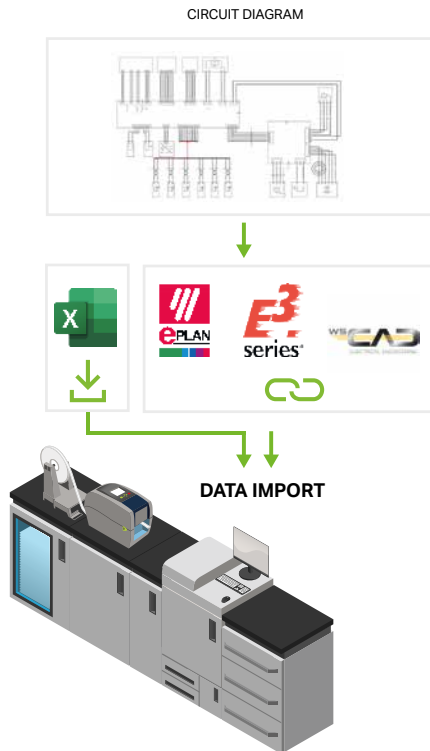
WAGO Smart Script Marking Software and WAGO Thermal Transfer Smart Printer – perfectly in tune with each other

# Quickly Import Your (Circuit Diagram) Projects

Data Import Using CAE Interfaces or Excel

## Your Benefits:

- Data from the circuit diagram can be transmitted via CAE interface, e.g. be directly read out and placed via EPLAN, ZUKEN or WSCAD.
- CAE-tool-independent import: Alternatively, an Excel table can be used to directly import into the Smart Script marking software.



# Accessories for Smart Printer



Roller for marking strips,  
Item No. **258-5006**



Roller for WMB Inline,  
Item No. **258-5007**



Roller for Mini-WSB Inline,  
Item No. **258-5008**



Roller for WMB Inline for  
Phoenix Rail-Mount Terminal  
Blocks, Item No. **258-5009**



Roller for WMB Inline for  
Weidmüller Rail-Mount Termi-  
nal Blocks, Item No. **258-5010**



Roller for Micro-WSB Inline,  
Item No. **258-5011**



Smart Printer  
case, Item No.  
**258-5015**



Ink ribbon,  
standard,  
black,  
Item No.  
**258-5005**



Ink ribbon,  
standard, white,  
Item No.  
**258-5005/  
000-008**



Ink ribbon,  
red,  
Item No.  
**258-5005/  
000-005**



Ink ribbon for  
self-laminating  
labels, black,  
Item No.  
**258-5014**



# Thermal Transfer Printer

Everything you need to know about this printer, its time-saving accessories and marking media is available at:

[www.wago.com/smartprinter](http://www.wago.com/smartprinter)



Smart Printer,  
Item No. **258-5000**

Cutter,  
Item No. **258-5030**

**WAGO GmbH & Co. KG**

Postfach 2880 · D-32385 Minden  
Hansastraße 27 · D-32423 Minden  
**info@wago.com**  
**www.wago.com**

Headquarters	+49 (0)571/ 887 - 0
Sales	+49 (0)571/ 887 - 44 222
Orders	+49 (0)571/ 887 - 44 333



WAGO is a registered trademark of WAGO Verwaltungsgesellschaft mbH.

“Copyright – WAGO GmbH & Co. KG – All rights reserved. The content and structure of the WAGO websites, catalogs, videos and other WAGO media are subject to copyright. Distribution or modification of the contents of these pages and videos is prohibited. Furthermore, the content may not be copied or made available to third parties for commercial purposes. Also subject to copyright are the images and videos that were made available to WAGO GmbH & Co. KG by third parties.”