



Load Management for Charging Infrastructure

WAGO Application Load Management

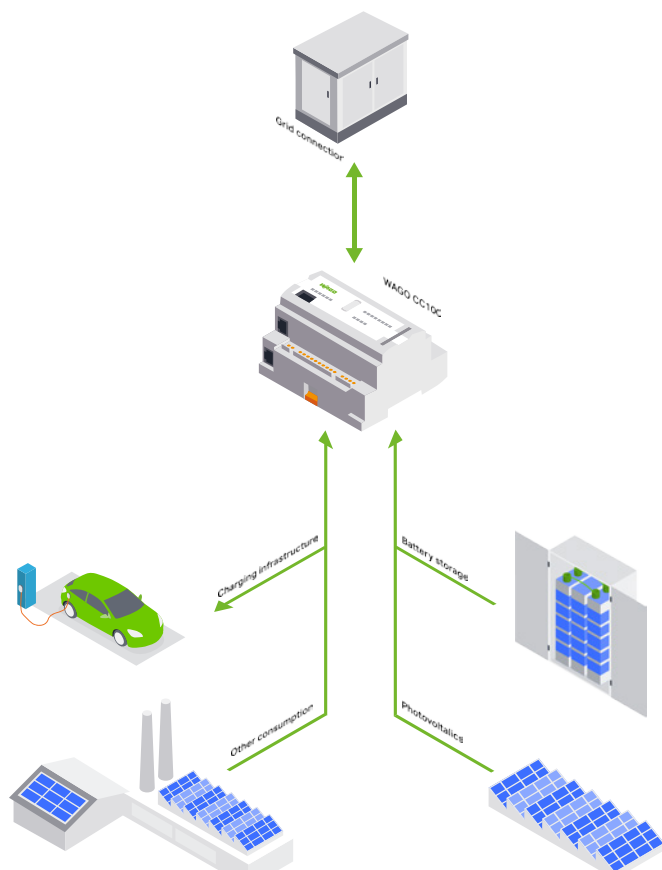




WAGO Application Load Management

Optimal Utilization of Charging Infrastructure

A charging station does not exist in a vacuum. The expanding charging infrastructure largely determines the growth of e-mobility. This is where load management for the charging infrastructure becomes an important topic. With WAGO Application Load Management, the integration of e-mobility/charging points and renewable generators can be designed into a holistic load management system.



Your Benefits:

- Maximum compatibility and scalability
- Optional offline operation (if needed)
- Full cost control through one-time fees
- Load spike prevention
- Maintaining grid capacity with dynamic expansion through solar surplus

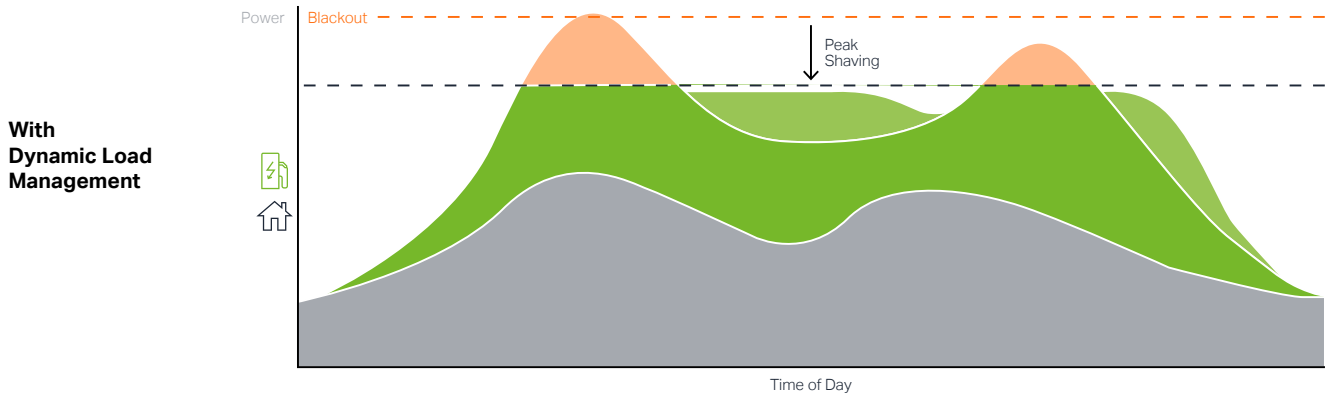
Easy Integration into Existing Infrastructure and Expansion of Grid Connection Capacity

WAGO Application Load Management has the following features:

- Technological interoperability
- Easy integration into existing charging infrastructure
- Consideration of renewable energy systems, additional consumers and storage systems
- Optimal utilization of existing grid connections

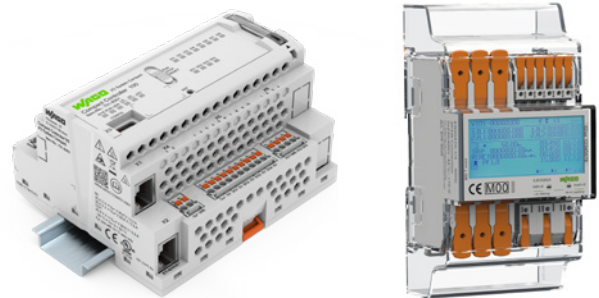
Dynamic and Static Load Management

The application allows intelligent, sustainable electrical vehicle charging with continuous power adjustment and use of all available capacity. This means that the charging capacity of the charging infrastructure is dynamically determined – depending on the total load at the location – and constantly optimized. It also boasts maximum scalability and compatibility with standard wallboxes and charging stations from many manufacturers.



Single-Source Solution

The solution can run on the following Docker®-capable WAGO controllers: the WAGO Compact Controller 100, WAGO Edge Controller, second-generation WAGO PFC200 and WAGO Touch Panels 600. The Compact Controller 100's design makes it particularly well-suited for integration into existing control cabinets. WAGO Application Load Management is compatible with standard Modbus®-capable power measurement modules and smart meter gateways. Data can be exchanged via a wide range of communication protocols, including OCPP 1.5 or 1.6, Modbus® and others. Since application configuration and management are performed via a Web interface, these processes are location- and software-independent.



WAGO Compact Controller 100 and WAGO Energy Meter (MID)



More information on the solution and all compatible charging stations, wallboxes and meters



www.wago.com/e-mobility

WAGO GmbH & Co. KG

Postfach 2880 · D-32385 Minden
Hansastraße 27 · D-32423 Minden

info@wago.com
www.wago.com

Headquarters	+49 (0)571/887 - 0
Sales	+49 (0)571/887 - 44 222
Orders	+49 (0)571/887 - 44 333

WAGO is a registered trademark of WAGO Verwaltungsgesellschaft mbH.

“Copyright – WAGO GmbH & Co. KG – All rights reserved. The content and structure of the WAGO websites, catalogs, videos and other WAGO media are subject to copyright. Distribution or modification of the contents of these pages and videos is prohibited. Furthermore, the content may not be copied or made available to third parties for commercial purposes. Also subject to copyright are the images and videos that were made available to WAGO GmbH & Co. KG by third parties.”